

Data Sheet

PRODUCT NAME

Flameproof Valve Monitor

MODEL NO.

ALS400

DESCRIPTION OF THE PRODUCT

The ALS400 series flameproof valve monitor is a rotary position indication device in HAZARDOUS area(Ex d IIC T6). Armed with mechanical switch, this device can senses valve position (on/off) for remote PLC or PC indication. The visual indicator on the top of the device can also clearly display the valve position for local detection.

APPROVED BY



ATEX



IP66

SPECIFICATIONS AND TECHNICAL DATA

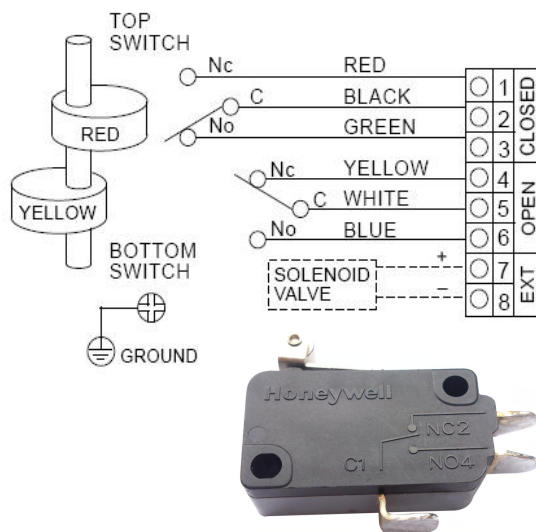
Enclosure	Die-casting aluminum: O-ring sealed
Coating	Dichromate conversion with polyester powder coating
O-rings	Buna N
Environment	NEMA 4, 4X, IP66
Area Classification	ATEX, NEPSI: Ex d IIC T6, CSA Canada: Ex d IIC T6 Gb, CSA US: Class I Zone 1 AEx dIIC T6 Gb
Fasteners	Stainless steel
Shaft	Stainless steel Namur
Conduit Entries	Two 1/2" BSPP Also available with two 1/2" or 3/4" NPT, 3/4" BSPP M20-1.5
Terminal Strip Contacts	8
Mounting Bracket	MB-3.4: 30 x 80, 130 H:20, 30 (Carbon steel)
Ambient Temperature	-20°C -50°C

Sensor: 2 SPDT Honeywell Mechanical Switches

Model No.	M2
Ambient Temperature	-20°C -50°C
Operating Voltage	Max: 16A, 125-250 VAC



WIRING DIAGRAM



DRAWING AND DIMENSION

